

FISCAL YEAR 2015 ANNUAL REPORT

New Hope Ministries helps build stronger, more stable communities by providing help with basic needs, assisting neighbors in financial crisis, and providing supporting programs that help youth succeed and prepare our guests for a better life. Guests at New Hope receive help with food to prevent hunger, housing assistance to prevent homelessness, heat and utility assistance, help with transportation, and help with medical needs.

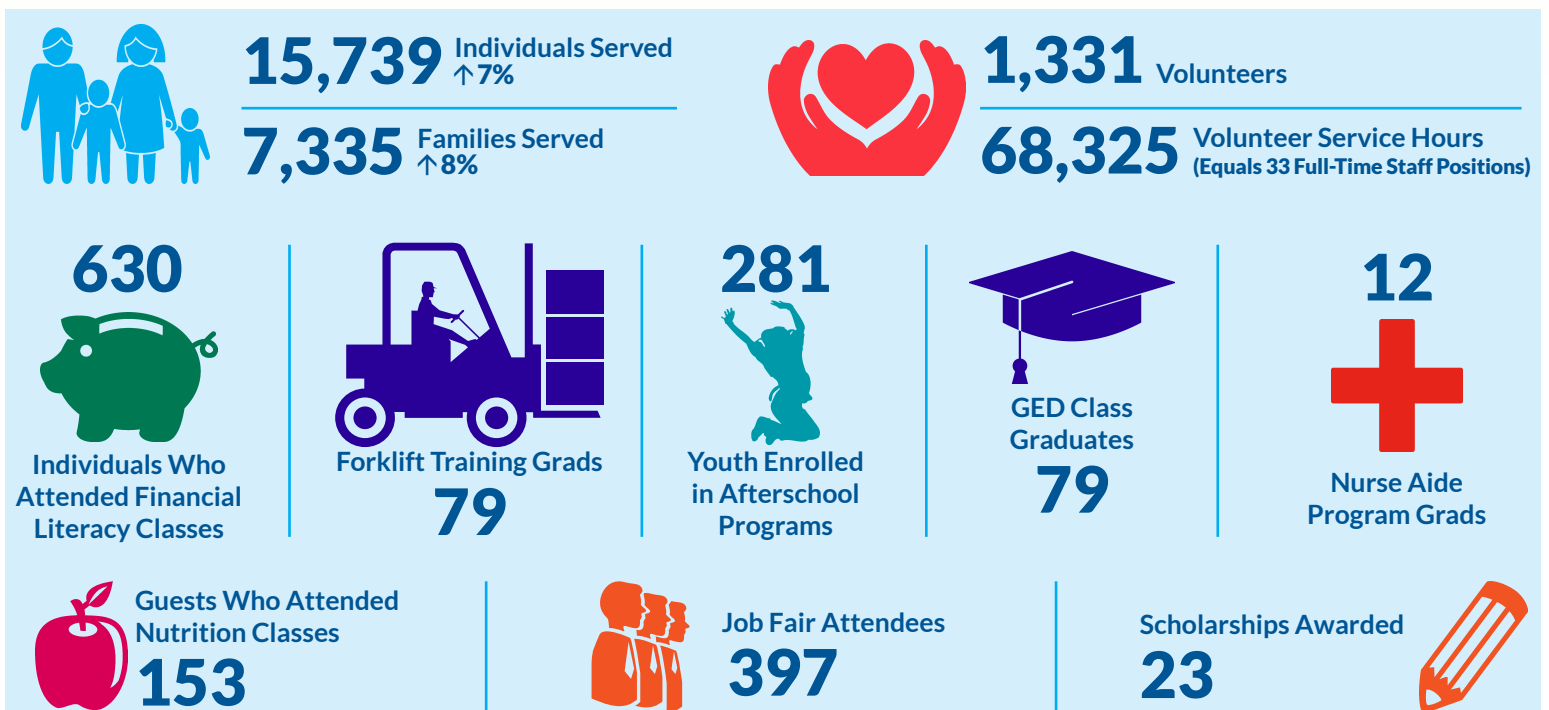
Typical New Hope guests are those living at or below 200%

of the federal poverty level and including the "working poor," senior citizens, single parent households, and families thrown into chaos by illness, job loss, spousal abandonment, or other crisis.

In addition to providing help with basic needs, New Hope operates weekly After School and summer programs for socially and financially disadvantaged children in Dillsburg, Dover, Mechanicsburg, Wellsville, Lemoyne, New Cumberland, and Enola. Youth attending these programs benefit from supervised homework time



and tutoring, fun and recreation in a safe environment, team building activities, life skills instruction, community service projects, and educational field trips and events that create a greater awareness of self and the world in general.



OUR MISSION

New Hope Ministries is a Christian social service agency that shows the love and hope of Christ by serving our neighbors in times of need and supporting their efforts towards stability.

BOARD OF DIRECTORS

William D. Oyster, CPA
President

David D. Nesbit, Esq.
Vice President

Michael Eby, CPA
Treasurer

Laura Martin
Secretary

Jorge H. Alonso, Ph.D.*

Shawn Berkebile

Charles Best

Richard Cline

Patricia Devlin

Gilbert Gomez*

Howard D. Kauffman, Esq.*

Daniel Kelly

Victoria Lindstrom*

Jane Long

Stefani McAuliffe

Kathryn Weaver Myers

Maureen Neary

Judy Walter

* Term fulfilled

MANAGEMENT STAFF

Eric Saunders, MSW, LCSW
Executive Director

Sue Fornicola
Program Director

Molly Helmstetter, CFRE
Director of Development

Julie Beers
Hanover Center Manager

Joanne Fortney
Food Program Manager

Christi Gard
Dover Center Manager

Joel Giovannetti
After School Program Manager

Laurie Wentzell
Dillsburg Center Manager

Mary Wheeler
Mechanicsburg West Shore
Center Manager

NEW HOPE MINISTRIES, INC • STATEMENT OF ACTIVITIES • YEAR ENDED JUNE 30, 2015

Revenue and Other Support

	2014	2015
Cash Support	2,442,078	2,407,834
Noncash support	3,299,291	4,712,799
Total revenues and other support	5,741,369	7,120,633

Expenses and Activities

	2014	2015
Program services	4,581,162	6,001,696
Management and general	171,540	192,148
Fundraising	300,919	353,303
Total expenses and losses	5,053,621	6,547,147
Changes in net assets	687,748	573,486

Net Assets - July 1, 2014 • 3,646,229 // Net Assets - June 30, 2015 • 4,219,715

CONTACT US

Dillsburg Center

6 N. Second Street
Dillsburg, PA 17019
(717) 432-3053

Dover Center

1836 Industrial Court
Dover, PA 17315
(717) 292-3441

Hanover Center

135 Baltimore Street
Hanover, PA 17331
(717) 698-3365

Mechanicsburg

West Shore Center

5228 E. Trindle Road
Mechanicsburg, PA 17050
(717) 766-7333

Executive Office

211 S. Baltimore Street
P.O. Box 448
Dillsburg, PA 17019
(717) 432-2087
info@nhm-pa.net

www.nhm-pa.org



Facebook: New Hope Ministries in Pennsylvania
Twitter: @NewHopeHelps



New
HOPE
Ministries

Sharing Christ's love by meeting human needs

